



# Lyneham Banks Repairs

22/6/2023

Royal Wootton Bassett & Cricklade  
Area Board Meeting

**Wiltshire Council**

**Current situation**



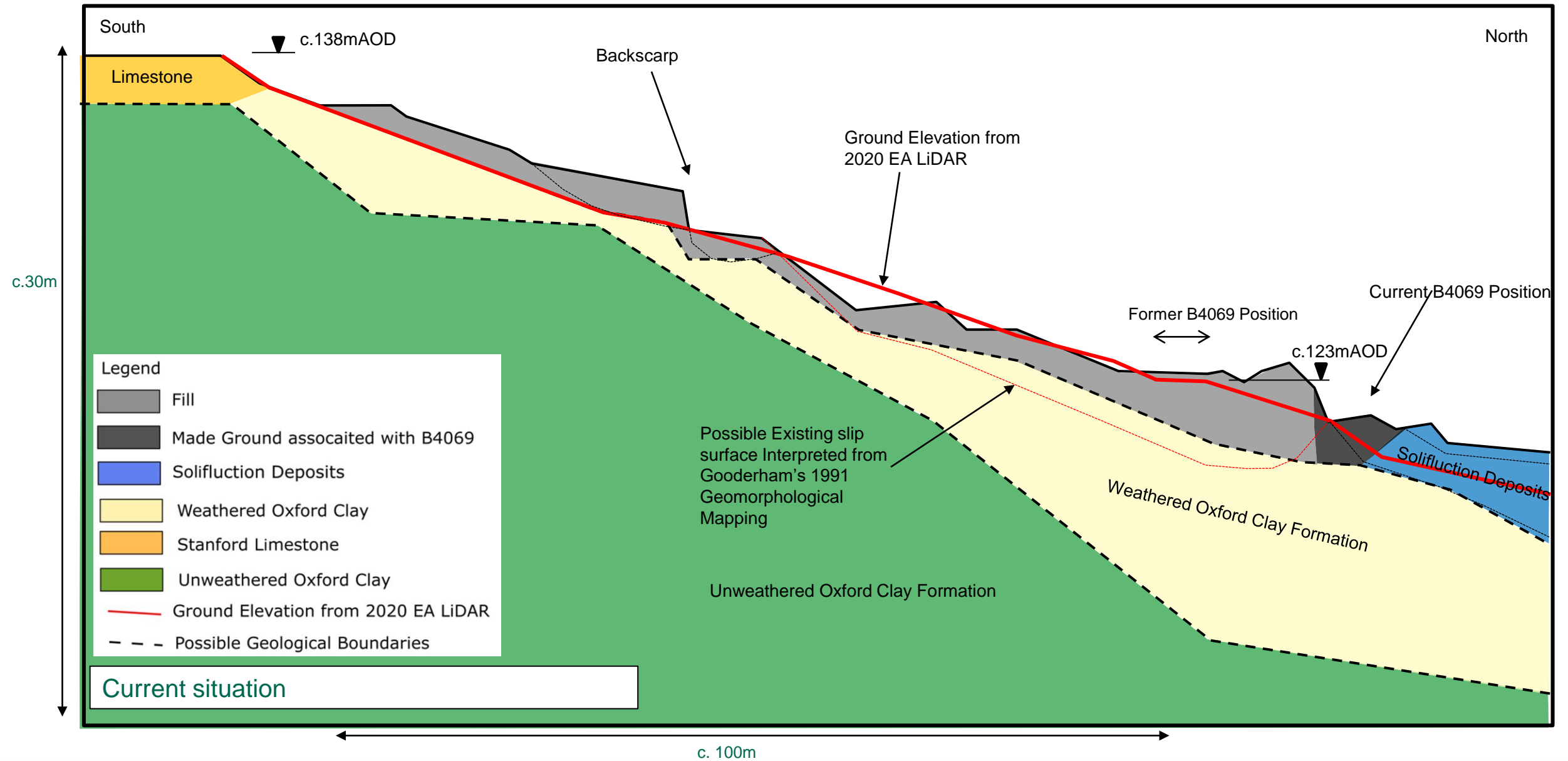
Main landslip area

B4069

Motorholics



*Background taken from Google Maps*



# Preliminary options

## Options

Main areas of required remediation:

- A) Upper slope (main body of landslide)
- B) Road corridor (B4069)
- C) Lower slope

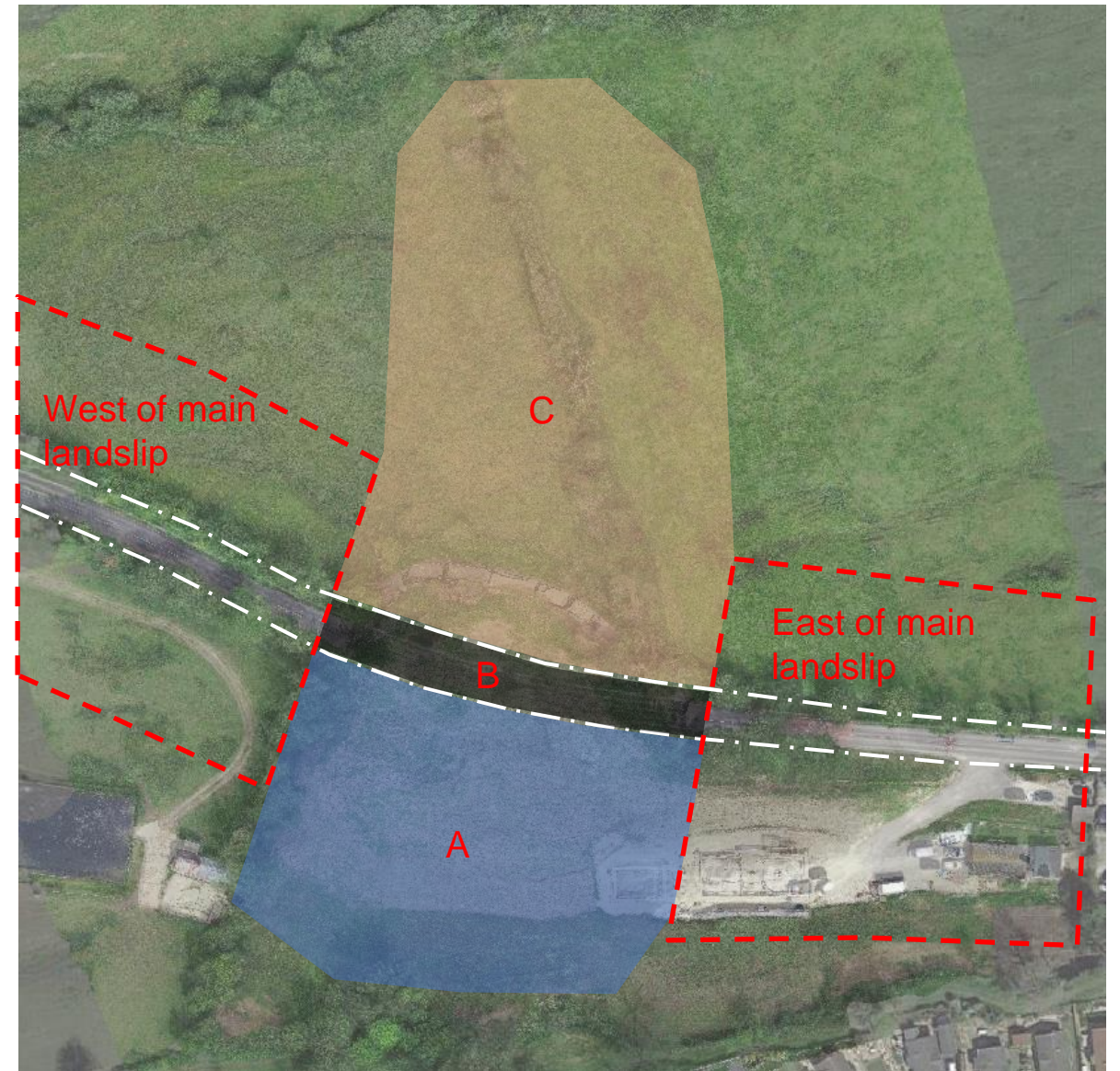
## Secondary areas:

Area west of main landslide

*Road is still intact but area of previous road cracking*

Area east of main landslide

*Road is still intact but built on relict slip (pre-1991 mapping) and land has been raised by developer*

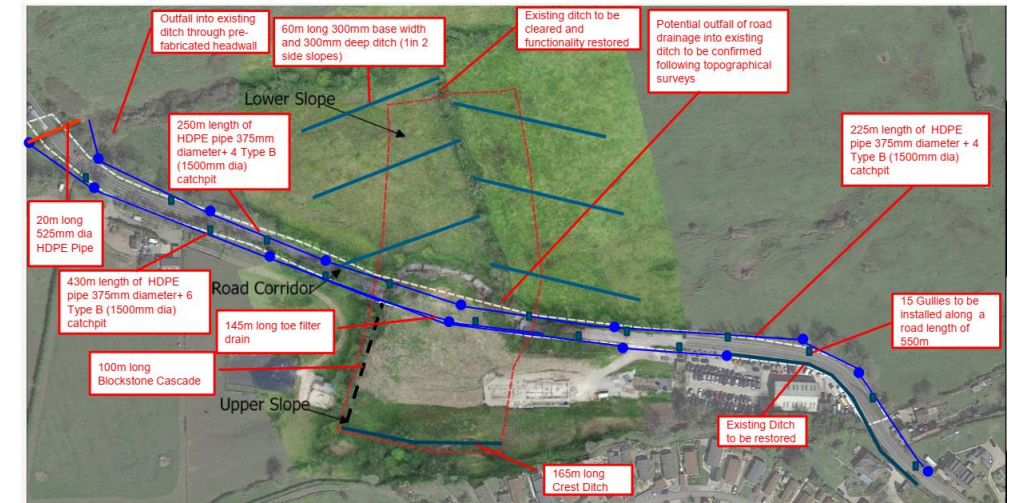
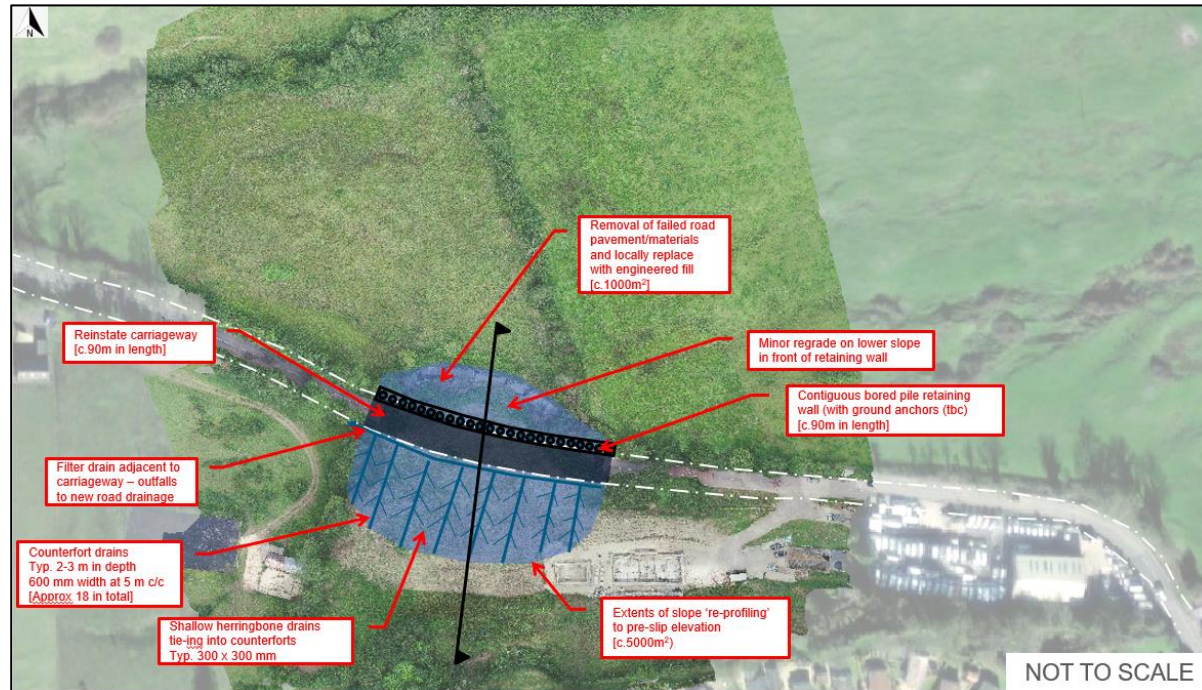


# Assessment criteria

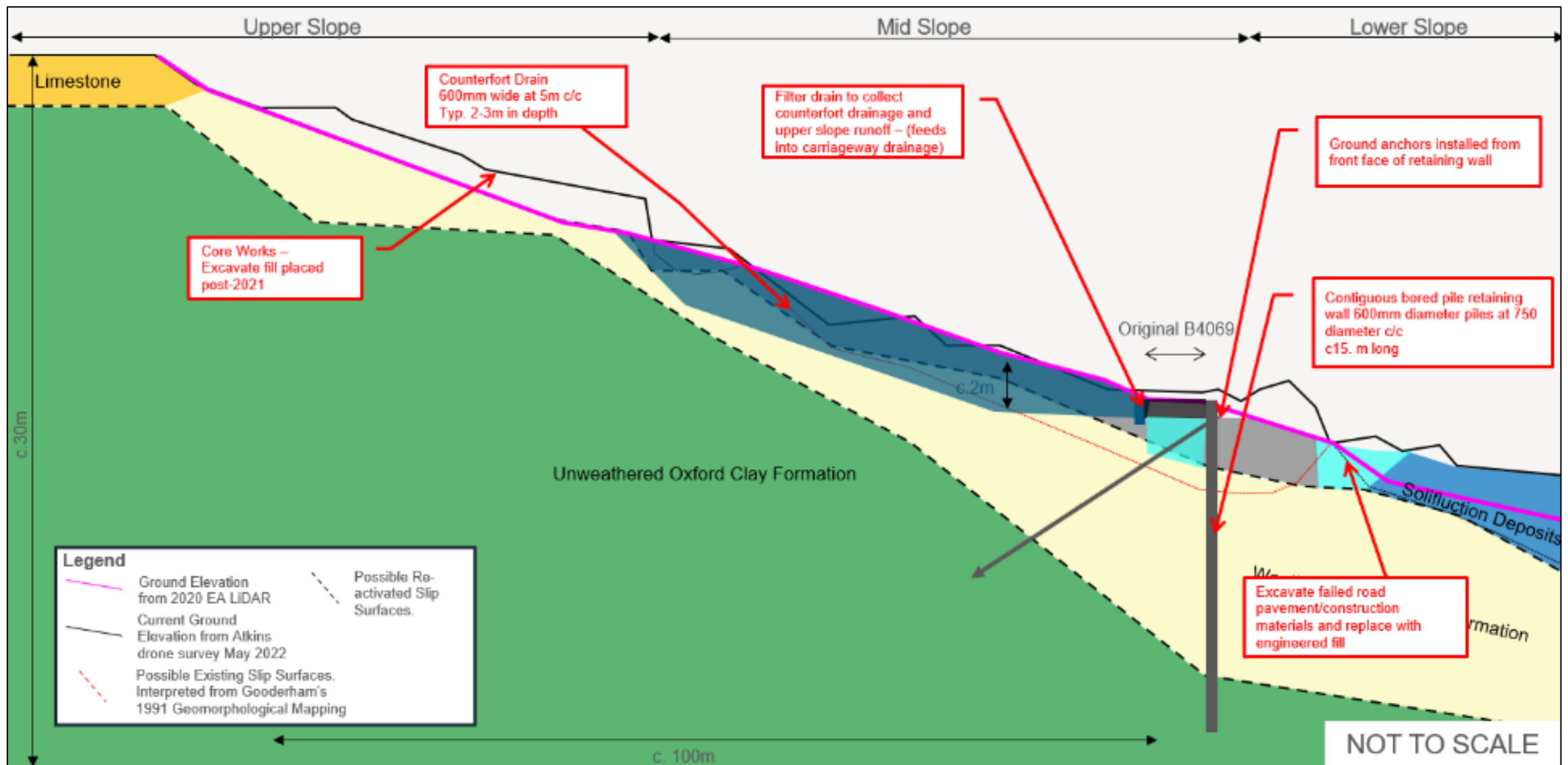
- Construction type and buildability
- Capital cost
- Whole life costs/maintenance
- Health and safety
- Environment/carbon
- Programme
- Land requirements

# Options selection outcome

- Core works – earthworks and drainage
- Option 3 – piled retaining wall with counterfort drainage

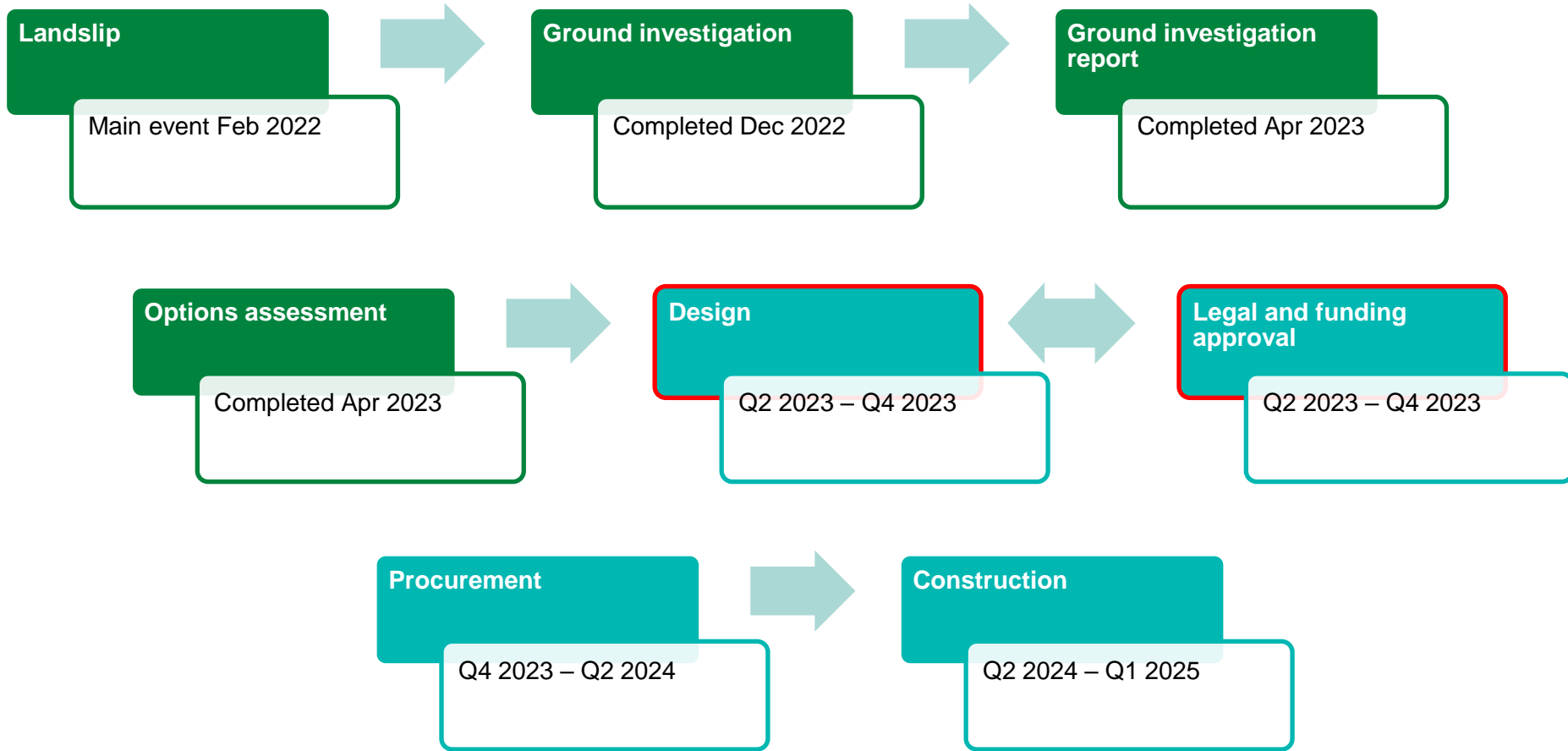


Final proposals will be subject to detailed design



## Option 3 – piled retaining wall

# Assumed Timeline



- Funding
- Land / legal agreements
- Wiltshire Cabinet decisions required



# Communications

- Dedicated website  
[www.wiltshire.gov.uk/highways-b4069-lyneham-banks](http://www.wiltshire.gov.uk/highways-b4069-lyneham-banks)
- Quarterly newsletter (next in May 2023)
- Updates to local meetings
- Dedicated email address  
[lynehambanks@wiltshire.gov.uk](mailto:lynehambanks@wiltshire.gov.uk)

9 February 2023

## Lyneham Banks – February Newsletter

In February 2022, a major landslide occurred on the B4069 at Lyneham Banks. Throughout 2022 we monitored ground movements to find a suitable window to access the site safely and undertake intrusive surveys. Following a period of significantly reduced ground movement during summer 2022 we were able to access the site and begin these investigations in late autumn 2022.

### Ground investigations completed

The on-site ground investigations were completed before Christmas, the information obtained through these investigations will help us to gain a better understanding of why the land failed and to develop design options for repairing the road. An investigation report is currently being prepared. This will clearly allow us to look at options for repairing the road.

**Wiltshire Council** Search wiltshire.gov.uk

Pay Report Apply Log in

Home > Highways

## B4069 Lyneham Banks

### Lyneham Banks landslide information and ongoing updates

In February 2022, a major landslide occurred on the B4069 at Lyneham Banks. Throughout 2022 we monitored ground movements to find a suitable window to access the site safely and undertake intrusive surveys. Following a period of significantly reduced ground movement during Summer 2022 we were able to access the site and begin these investigations.

You can receive updates from the Lyneham Banks Newsletter by signing-up to the [Wiltshire Council newsletter](#), and ticking the box for Lyneham Banks.

### Traffic Management

In November 2022 a series of traffic management changes were made to the roads around the B4069. This followed reports of a high number of unsuitable vehicles using the local roads around Lyneham, Bradenstoke and the surrounding parishes. The main changes were:

- introduction of a new one way (Northbound only) on Clack Hill
- introduction of new waiting restrictions at the southern end of Clack Hill

### Downloads

- [Lyneham Banks Update - RWB Area Road 14.03.23](#) (Open Document text format) (1.4MB) ↗
- [Lyneham Banks - Traffic Survey, January 2023](#) (Open Document text format) (1.416KB) ↗
- [Bradenstoke Traffic Management Options](#) (Open Document text format) (1.6MB) ↗
- [Bradenstoke Traffic Management Options](#) (PDF) (1004KB) ↗
- [Lyneham Banks](#)

**Wiltshire Council**